

# The Land of Mu is exactly Taiwan



Taiwan Paleocivilization  
Research Center

Host / Hsien-Jung Ho

<http://newidea.org.tw>

[newidea.ufoho@msa.hinet.net](mailto:newidea.ufoho@msa.hinet.net)

# The lost first civilized continent in the world — the land of Mu

## The Source of the land of Mu



British: James  
Churchward

Churchward found the Naacal tablets, the interesting symbols and vignettes, in the Indian temple in 1868, and he researched and finally deciphered its meaning after 2 years. Then he searched for tablets of remains and ancient books around the world, and investigated a lot of ancient remains in the world.



# The Empire of the Sun was in the land of Mu

## Churchward located the Land of Mu

- When Churchward traveled the South Ocean Islands for a month, then from the locations of prehistoric megalithic civilization where he found drew the map of Mu, which was a lost continent in the middle of Pacific Ocean.
- The Domain of Mu extended from somewhere north of Hawaii to the southeast of Easter Island, southwest of Tonga-tabu, and to the northwest of the Ladrões. It was over 8,000 km from east to west, and from north to south over 5,000 km. It was a boundless land.

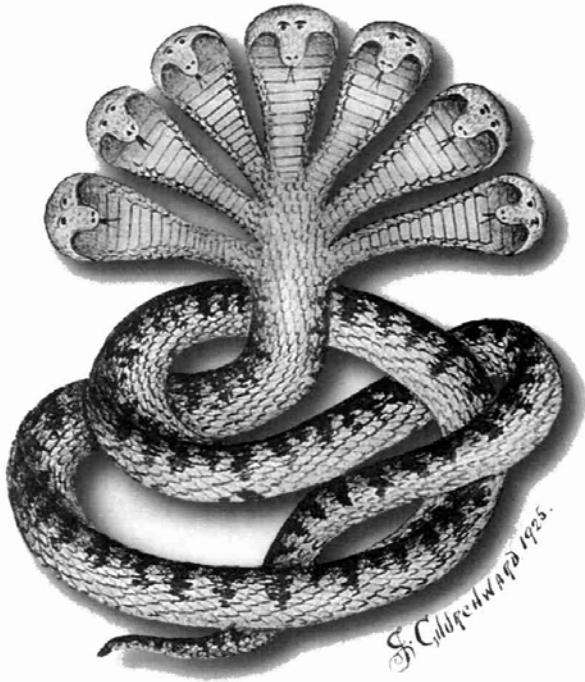
# The map of Land of Mu



# Churchward's Description of Mu

Long long ago, there was a great civilized Empire of the Sun in the land of Mu, the Motherland of Man, in the Pacific Ocean. The Empire ruled the earth, had possession of huge temple and 7 beautiful cities. Their people lived with free and unrestrained under the shiny sun. The emperor named "La Mu", and "La" means the Sun, "Mu" Means the mother. The civilization of Mu dates back more than 50,000 years ago.

# Society of the Empire of the Sun



The Great  
Creator——  
Narayana

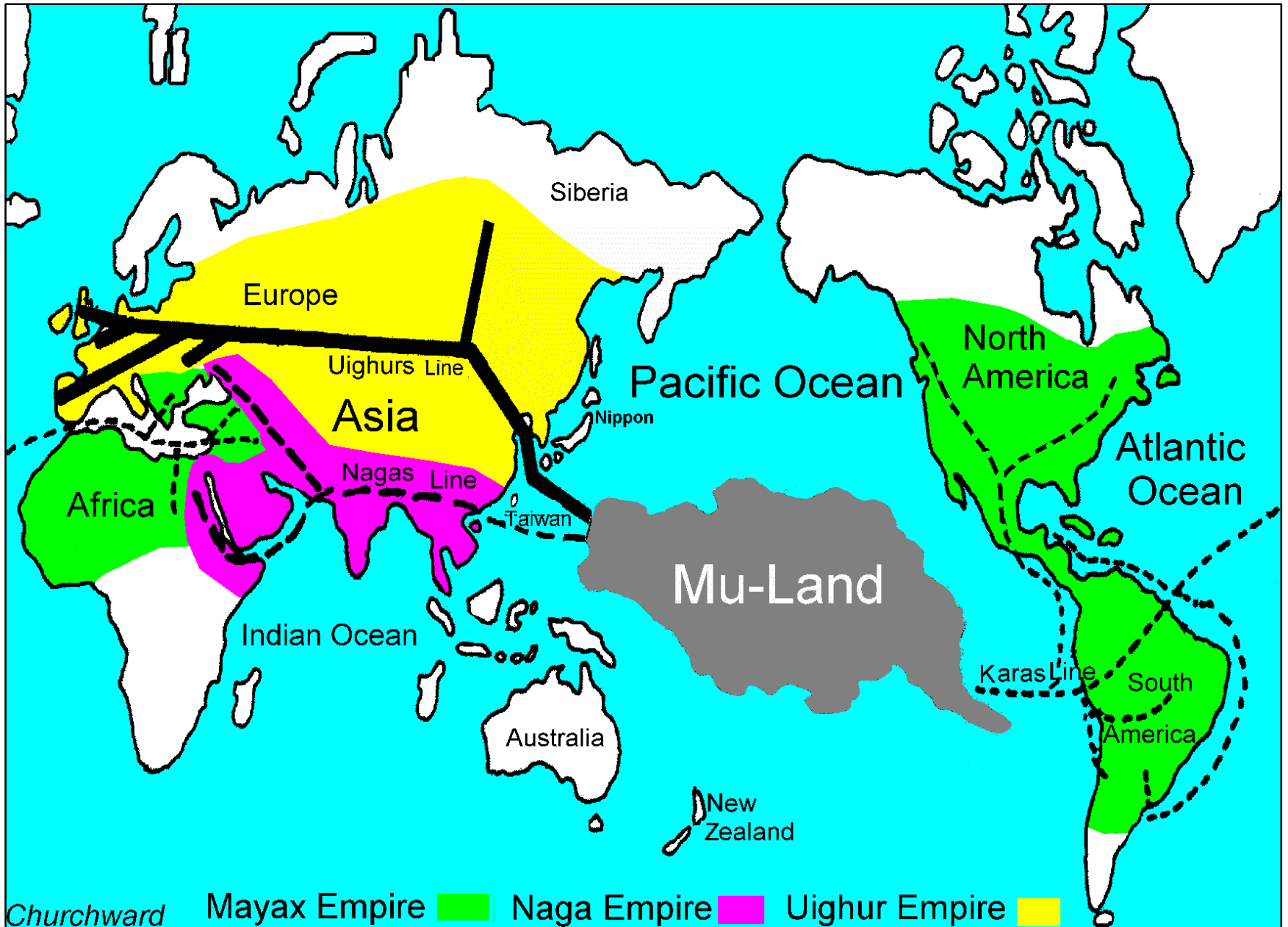
La Mu, the Emperor, managed all thing, politics and religion at the Royal Palace of the Capital. The people organized by ten races, and there were 64 million people in all; and the leading right of culture was had by white race. It was a matriarchal society and religion had only one, worshiped the God of Sun, and worshiped the Creator of Universe—the seven-headed serpent—Narayana.

# The people of the Empire of the Sun emigrated abroad to establish colonies

- One Group of Karas sailed for east to get to Middle America, and extended to North America and South America to establish the colony of Mayax Empire.
- One Group of Nagas sailed for west to get to Burma, and extended to India, Middle Asia and Middle Europe to establish a colony of Naga Empire.
- One Group of Uighurs sailed for west to get to China, and extended to Mongolia, Eastern Europe and Siberia to establish a colony of Uighur Empire.



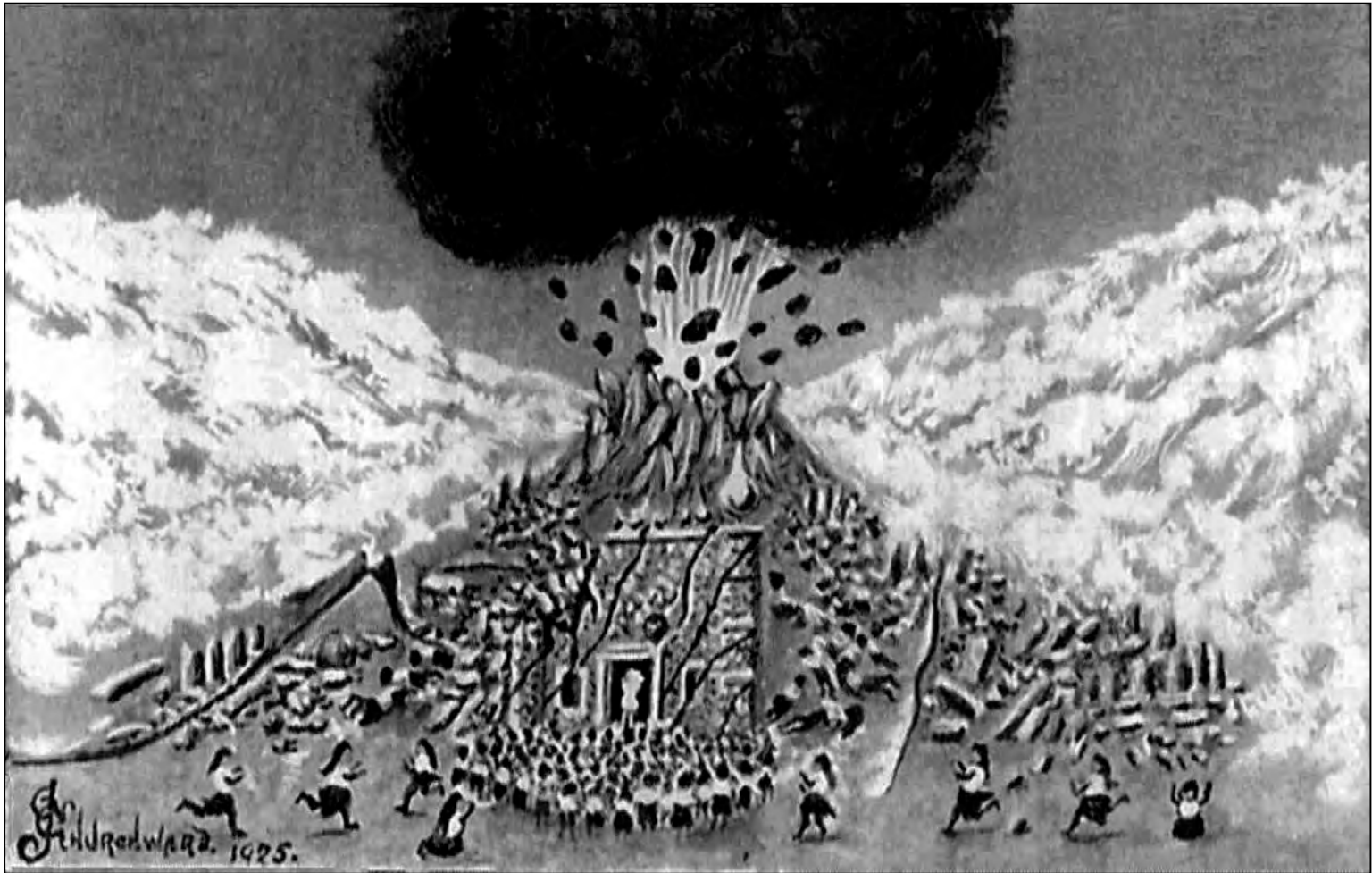
# The line of colonization from the land of Mu to the entire world



# The Destruction of Mu

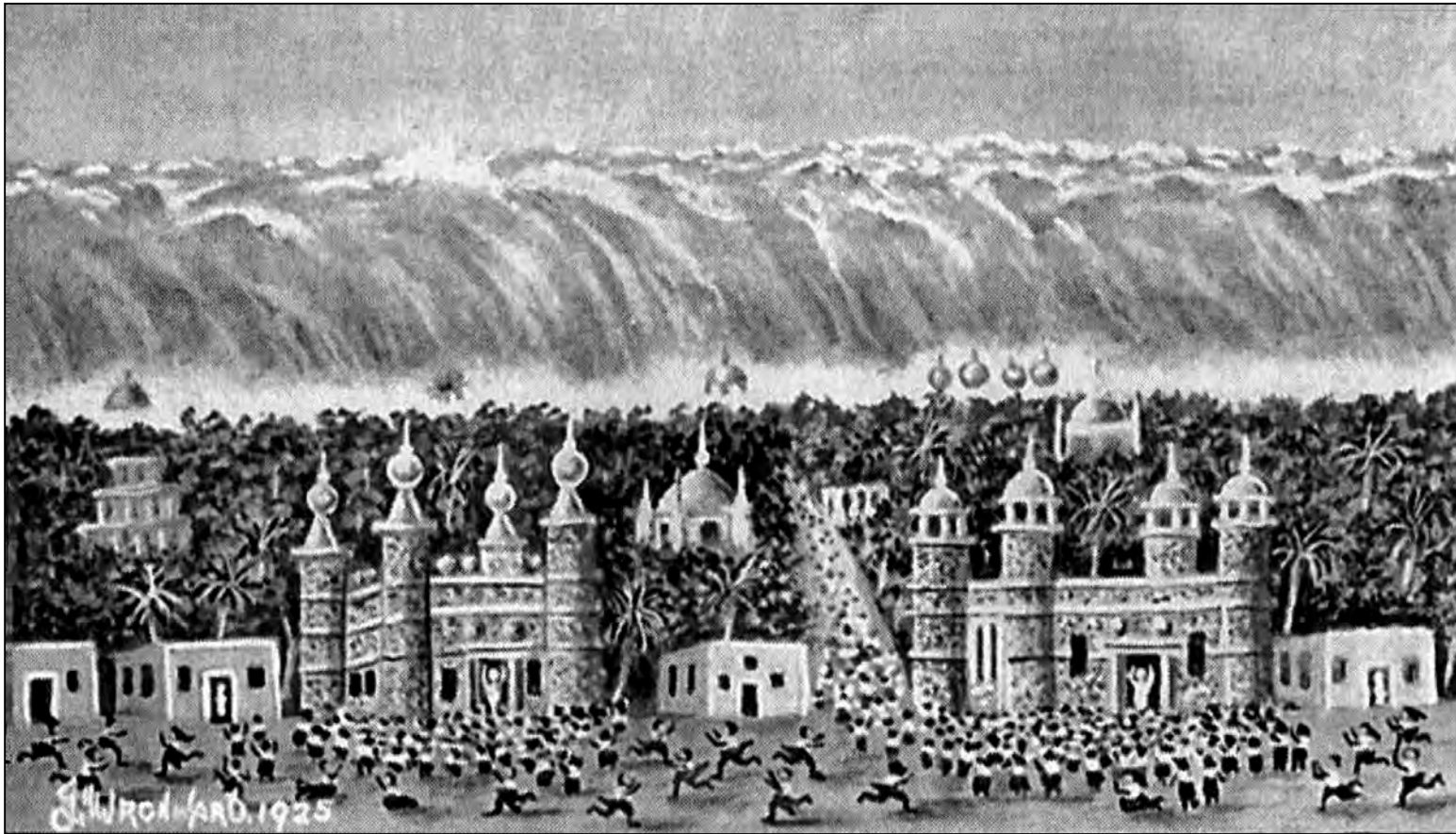
According to Churchward's description, about 12,000 years ago a great catastrophe struck the whole land of Mu. The beginning from the capital, rumblings from the bowels of the earth, followed by earthquakes and volcanic outbursts. The volcanoes belched out their fire, smoke and lava. A thick black pall of smoke overshadowed the land. The land heaved and rolled like the ocean's waves, and trembled and shook like the leaves of a tree in a storm. Then huge cataclysmic waves from all sides came rolling in over the land. The cities, forests, people and animals all were engulfed. Finally, the land of Mu sank into the ocean and disappeared.

# A volcanic catastrophe



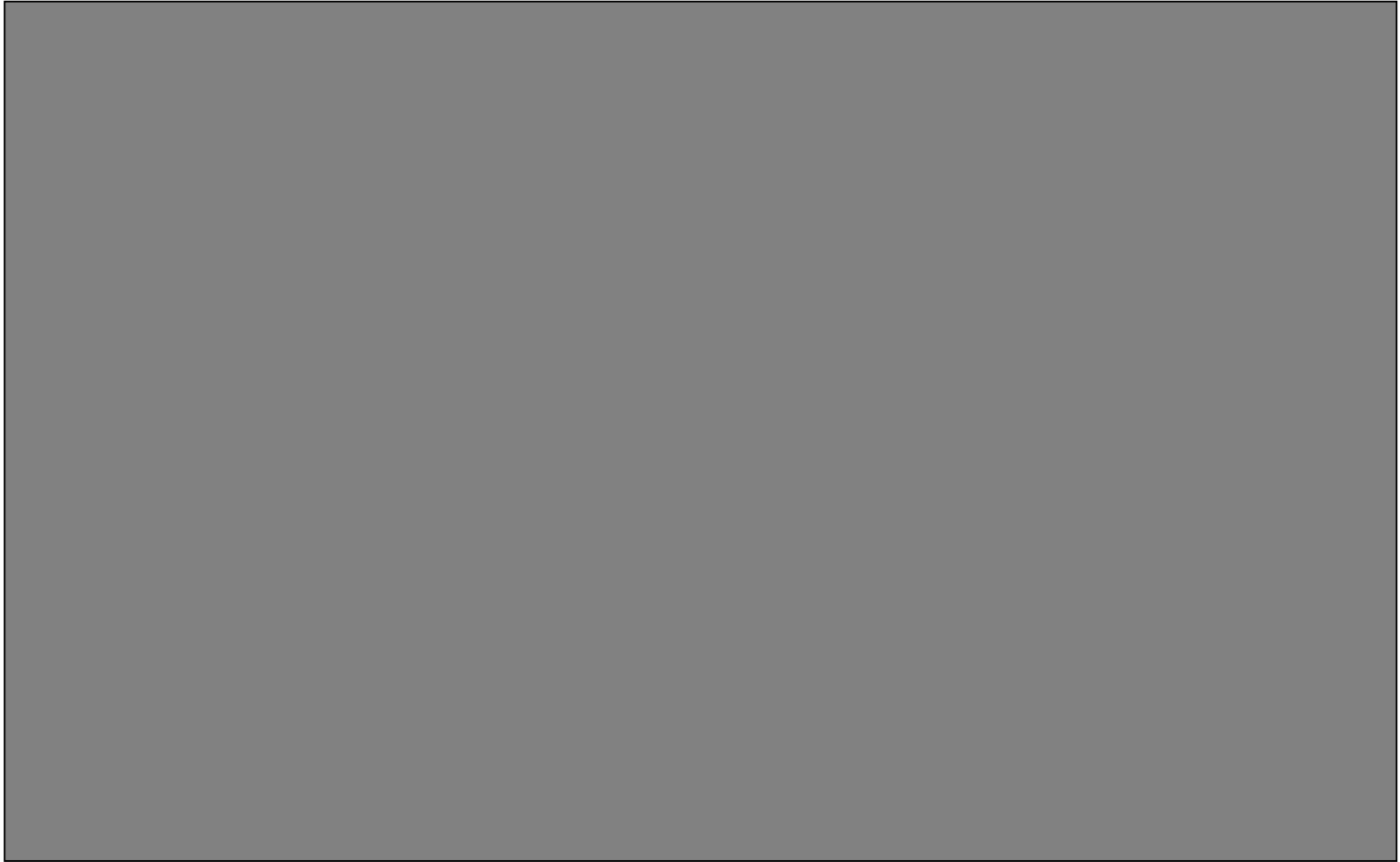
Temples and palaces of Mu came crashing to the ground and monuments and statues were overturned. The cities became heaps of ruins.

# A volcanic cataclysm



Such as completed the destruction of the Maya edifices in Yucatan, after the earthquakes had shaken them to their foundation. The Yucatan Mayas—the builders—were virtually wiped out, 9500 B. C.

# After the submersion of Mu



After the mega-tsunami, this figure showed the Empire of the Sun was destroyed, and left disused hilltops and alarmed people of Mu.

# The other relevant existed records of the land of Mu

1. Map of Mu in "*Book of the Dead*".
2. "*Book of the Death*" recorded the land of Mu disappeared.
3. "*Book of the Death*" had figures to be related to the land of Mu.
4. A North American Indian Tableau depicts the destruction of Mu.
5. A commemorative monument to Mu was found in Gold Gulch of Nevada.
6. There are existing ruins which tell the lost continent of Mu.

# There are existing ruins which tell the lost continent of Mu

- At Copan of Honduras 、 Quirigua of Guatemala 、 Opico and Cirraca-Mecalco of El Salvador have a lot of prehistoric traces, and leave the symbols related to the land of Mu.
- At Uxmal in Yucatan of Mexico, a ruined temple bore inscriptions commemorative of the “Lands of the West (Mu), whence we came”; and the pyramid of Teotihuacan in southwest of Mexico City, according to its inscriptions, was raised as a monument to the destruction of these same “Lands of the West (Mu)”.

# The interpretation of “the land of Mu” is exactly ancient Taiwan

- 1.The mega-tsunami event in Taiwan corresponded with the land of Mu.
- 2.The Naacal Tablets reveal the land of Mu may be Taiwan.
- 3.Many fossils of ancient elephant in Taiwan corresponded with the land of Mu.



# 1. The mega-tsunami event in Taiwan corresponded with the land of Mu

## The land of Mu is not in the middle of the Pacific Ocean

From the perspective of marine geology, except coastal continental shelf, the marine depth in the Pacific Ocean exceeds 1,000 meters; the position of Churchward's Mu-Land is deeper and there is never any continent existed. According to geologic perspective, if the seabed of coral reef descends at a rate of 3 cm/k yr in common, in 10,000 years only 30 cm drop. So, the land of Mu is not in the middle of the Pacific Ocean.

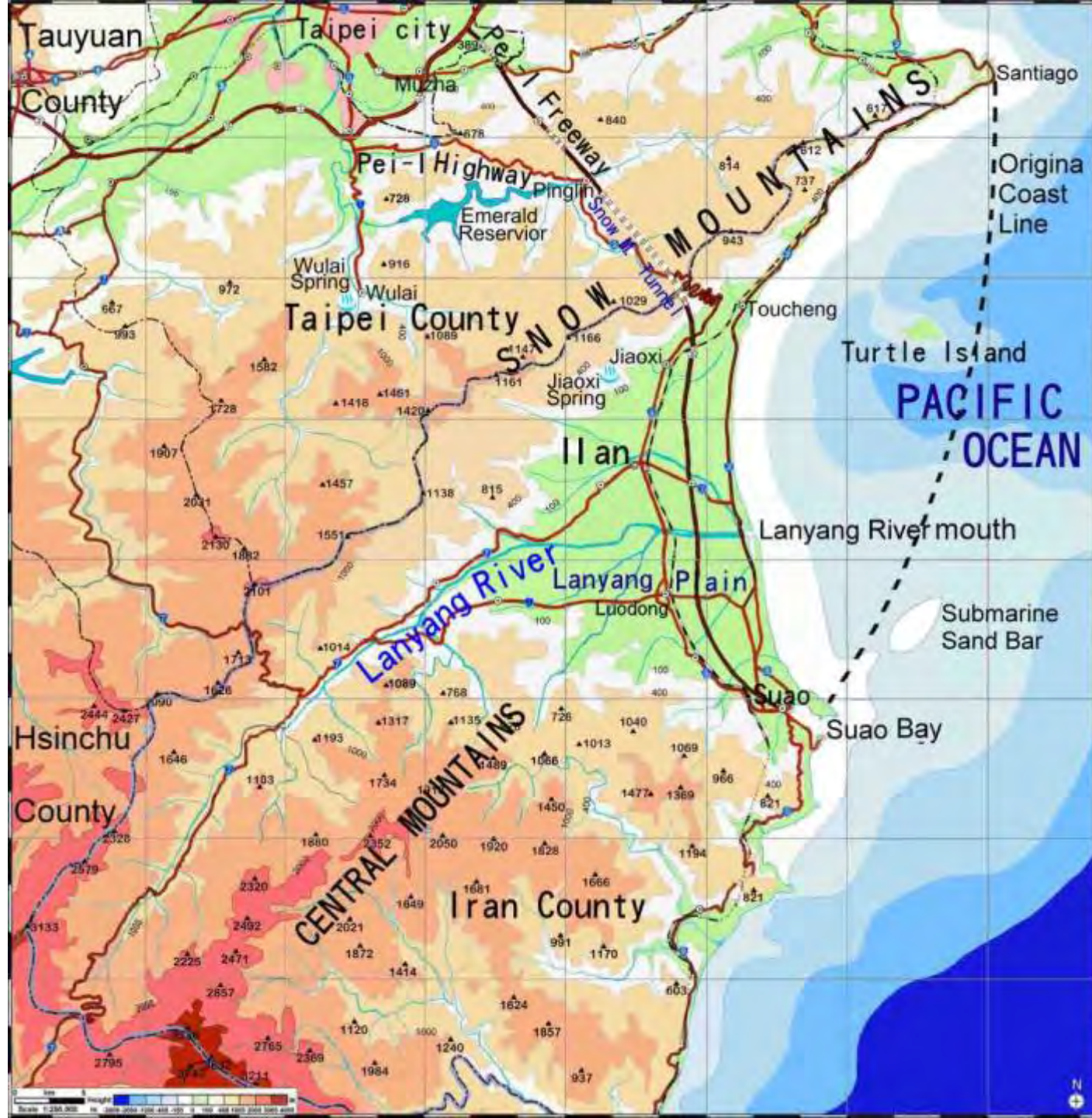
## The land of Mu should be near Ryukyu and Taiwan

As for geology, on the Pacific Ocean, there are only regions along Japan, Ryukyu, Taiwan and the coasts of South and North America will take place violent volcanic eruption and earthquake in ancient times, and Churchward's Land of Mu is in the safety area should be excluded. Because change of the earth's crust with several million year or several ten million year as an unit go on, so the state several ten thousand years ago should be limited with the modern difference. Along the coasts of South and North America have not found any sunken continent, so volcanic eruption and sunken continent may happen near Japan, Ryukyu or Taiwan.

# The landslide of Snow Mountains is understood as the sunk land of Mu

According to "*The lost continent of Mu*" described the circumstances, which accorded with the volcanic eruption at the north segment of Snow Mountains in Taiwan made the east hillside collapsed and a big landslide caused earth and stone fell into sea, and triggered off a mega-tsunami in the Pacific Ocean, and times were all the same 12,000 years ago. The big landslide of Snow Mountains collapsed that made the capital of the Empire of the Sun in the coast area of Ilan to sink into the sea, and formed the big circular gulf that Churchward described for the sunk land of Mu.

The topographic map of north-eastern corner and waters of Taiwan



# The landslide of Snow Mountains is understood as the sunk land of Mu

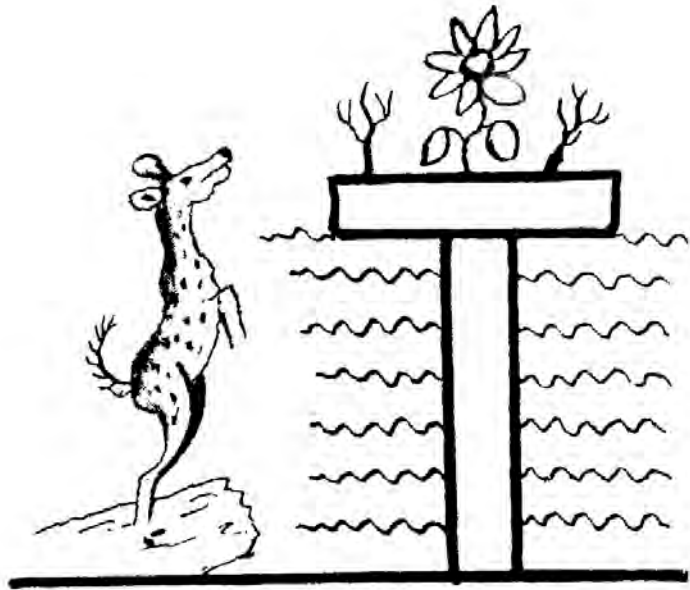
According to "*The lost continent of Mu*" described the circumstances, which accorded with the volcanic eruption at the north segment of Snow Mountains in Taiwan made the east hillside collapsed and a big landslide caused earth and stone fell into sea, and triggered off a mega-tsunami in the Pacific Ocean, and times were all the same 12,000 years ago. The big landslide of Snow Mountains collapsed that made the capital of the Empire of the Sun in the coast area of Ilan to sink into the sea, and formed the big circular gulf that Churchward described for the sunk land of Mu.






## Taiwan was verified to be the land of Mu

The "mega-tsunami event" at the northeast corner of Taiwan corresponded with the Churchward's plot of "*The lost continent of Mu*", including the volcanic eruption, earthquake, submergence of land in the Pacific Ocean and 12,000 years ago. So, it can do for the evidences of "Taiwan was exactly the land of Mu".

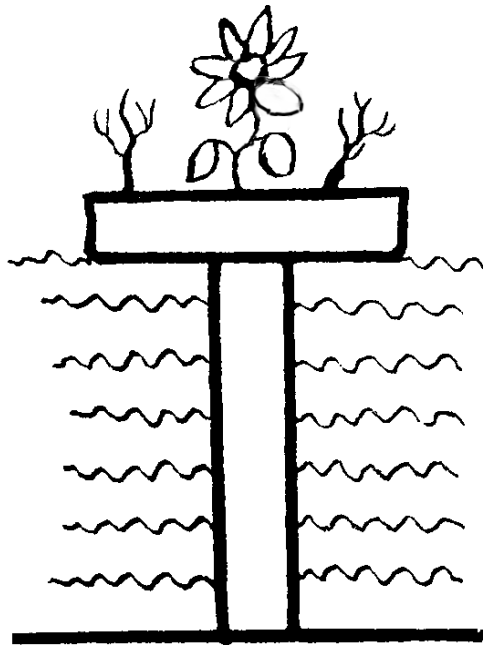
## 2. The Naacal Tablets reveal the land of Mu may be Taiwan



### Churchward deciphered the Naacal Tablets



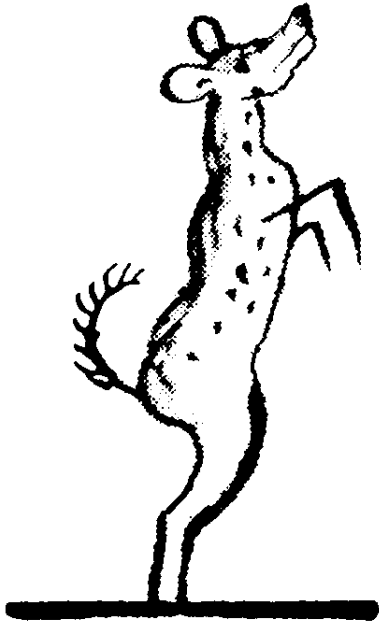
In the vignette,  symbolizes the land of Mu that is emerged; the lotus  is the floral symbolical flower of Mu; three pieces of foliage  give Mu's numeral that means there are 3 lands, including 2 smaller islands; the water  symbolizes the emerged land is surrounded by water; the jumping deer  deciphered the first man on earth.

### 3 pieces of foliage shows the land of Mu may be ancient Taiwan



The vignette  shows 3 pieces of foliage above , which symbols the land of Mu including 3 islands. We can decipher the large one is Taiwan Island and the other smaller two are Ryukyu Archicontinent and Penghu land bridge which separate from Taiwan with trough and waterway. The other two are found ancient remains of city or temple in submarine now, so it may be the evidences of the land of Mu.

# The jumping deer in the vignette was Formosan sika deer



According to the picture of jumping deer (Left), its appearance and characteristic are very similar to Formosan sika deer (right) that means the first man on earth maybe appeared in Formosa (Taiwan).



# Jumping deer is on behalf of the first man should be born in ancient Taiwan

Only growing in southeastern Asia, the Formosan sika deer is the most and largest one in the world. This deer was found from plain to mountain in everywhere of Taiwan, and history of Taiwan and civilization of aborigine are close correlation with it. Only one year in 1638, the record of Netherlander showed 150,000 sheets of deerskin exported from Taiwan. From ancient times till last century, the deerskin of Taiwan was the largest export in the world. So, the jumping deer is on behalf of the first man should be born in ancient Taiwan, and Taiwan may be the motherland of man——Garden of Eden.



### 3. Many fossils of ancient elephant in Taiwan correspond with the land of Mu

The land of Mu once was the paradise of ancient elephants

According to Indian and Maya Records, there were many ancient elephants walking in the forest in the glacial era. Roaming through the primeval vast forests of the land of Mu were herds of “mighty mastodons and elephants” that flapped their big ears to drive off annoying insects.

# Once there were a great number of elephants in Taiwan

There are many fossils of ancient elephant confirm Taiwan once have been a paradise of elephants. In Hsinhua hill region of Tainan, Chailiao River and some area in Taiwan have appeared a lot of huge elephant's fossils, among them there are some Stegodons that have now already disappeared.



The down molar tooth of Stegodon at Tainan (left), the mammoth's skull in Taiwan Strait (middle) and the elephant skull at Chai-liao River (right).



Lian-Jie Wang, the expert of fossil, reserves about 70,000~80,000 pieces of Taiwan's fossil. These are fossils of elephant's molar (left) and the incomplete fossils of ivory and elephant's vertebra (right) that Lian-Jie Wang keeps.

# The fossils of ancient elephant prove Taiwan should be the land of Mu

Many fossils of ancient elephants were excavated everywhere in Taiwan, such as: *Stegodon Sinensis*, *Stegodon Akashiensis*, *Stegodon Aurorae*, Indian *Stegodon*, Taiwanese mammoth, *Elephas Maximus*, *Elephas Namadicus*, *Stegodon Insignis*, *Stegodon Orientalis*, *Palaeoloxodon Sp.*, *Mastodon* etc., which confirmed Taiwan once was a paradise of ancient elephants. Its circumstances were similar to the land of Mu, so Taiwan should be the land of Mu.

# The land of Mu and Atlantis should be the same continent of lost ancient civilization

## There were 14 common grounds between Atlantis and Mu-Land

The sites of Plato's Atlantis and Churchward's Mu didn't find yet. Because the sources were different, during 12,000 years the legends couldn't avoid the mistakes, but there were still 14 common grounds of the same description between them:

- 1. It was the first civilized land.
- 2. It was the first great civilized empire of man.
- 3. The people of empire made up of 10 tribes.
- 4. The society with rich products was prosperous.

- 5. The people's lives were free and happy.
- 6. Capital was built near great river mouth.
- 7. There were enormous temple and palace in capital.
- 8. There were a herd of huge elephants on the grassland.
- 9. There were overseas colonies.
- 10. It was ruined by earthquakes.
- 11. The cataclysm happened and it sank.
- 12. It sank completely in almost a single day.
- 13. It disappeared about 12,000 years ago.
- 14. It sank on the immense ocean.

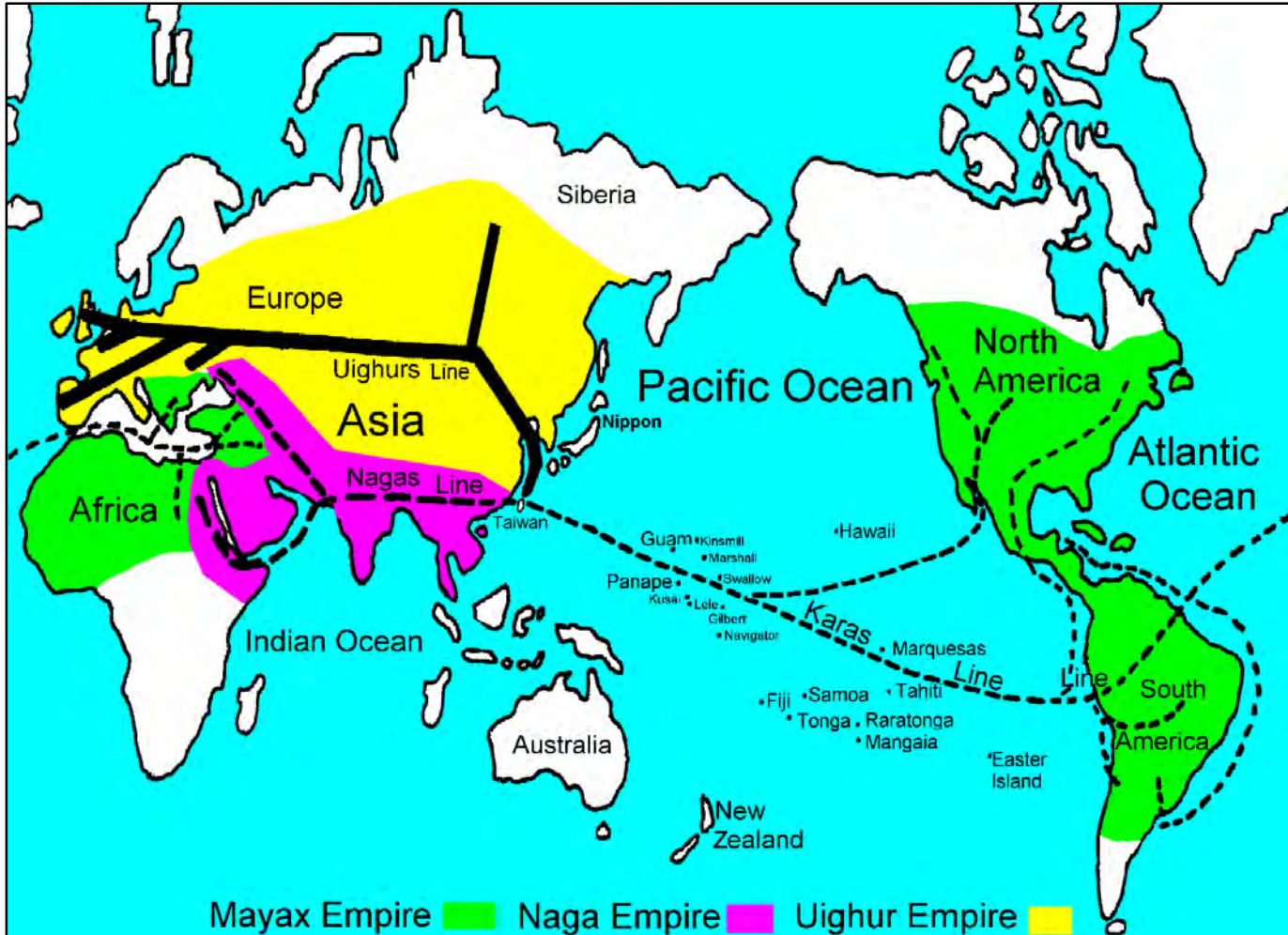
# Archaeologist asserts the land of Mu and Atlantis are the same one

German Famous archaeologist Heinrich Schliemann threw himself into the archaeological undertaking in all his life in the 19th century, made Homer's epic considered to be the country with fictitious literature and art in medium or long term: Troy, Mycenae and Tiryns, reappeared its history. He, on apparently two records of the *Troano Manuscript* and the *Lhasa Record*, asserts that Atlantis was the land of Mu.



# The land of Mu and Atlantis should be ancient Taiwan

- These 14 common grounds accord with the essential condition of history, including: time, place, personage, culture, affair, etc. that reveals the lost two continents should be the same one and the ruler is the Empire of the Sun only.
- The site of the Empire of the Sun is in Taiwan, so many experts look for the lost continent of civilization that is so-called the land of Mu or Atlantis should be the same land of ancient Taiwan. The map of the line of colonization from the land of Mu to the entire world should be redrawn as the following.



Line of colonization from Mu-Land to the entire world

# The land of Mu lost about 12,000 years ago coincidence with Taiwan mega-tsunami

According to extinction times of first man of Japan and dating times of the drill core at DOP Site 1202, and the end times of the fourth glacial period, infer mega-tsunami event in Taiwan happened about 12,000 years ago. It is identical to sink in times with the land of Mu.