

**The Mu-land and Atlantis
should be the same One**

The land of Mu and Atlantis should be the same continent of lost ancient civilization

There are 14 common grounds between Atlantis and Mu-Land

The sites of Plato's Atlantis and Churchward's Mu didn't find yet. Because the sources were different, during 12,000 years the legends couldn't avoid the mistakes, but there were still 14 common grounds of the same description between them:

- 1. It was the first civilized land.
- 2. It was the first great civilized empire of man.
- 3. The people of empire made up of 10 tribes.
- 4. The society with rich products was prosperous.

- 5. The people's lives were free and happy.
- 6. Capital was built near great river mouth.
- 7. There were enormous temple and palace in capital.
- 8. There were a herd of huge elephants on the grassland.
- 9. There were overseas colonies.
- 10. It was ruined by earthquakes.
- 11. The cataclysm happened and it sank.
- 12. It sank completely in almost a single day.
- 13. It disappeared about 12,000 years ago.
- 14. It sank on the immense ocean.

These 14 common grounds accord with the essential condition of history, including: time, place, personage, culture, affair, etc. that reveals the lost two continents should be the same one and the ruler is the Empire of the Sun only.

Archaeologist asserts the land of Mu and Atlantis are the same one

German Famous archaeologist Heinrich Schliemann threw himself into the archaeological undertaking in all his life in the 19th century, made Homer's epic considered to be the country with fictitious literature and art in medium or long term: Troy, Mycenae and Tiryns, reappeared its history. He, on apparently two records of the *Troano Manuscript* and the *Lhasa Record*, asserts that Atlantis was the land of Mu.

The land of Mu and Atlantis should be the same ancient Taiwan

- According to extinction times of first man of Japan in Okinawa about 18,000 years ago and dating times of the drill core at DOP Site 1202, and the end times of the fourth glacial period, infer mega-tsunami event in Taiwan happened about 12,000 years ago. It is identical to sink in times with the land of Mu.
- The site of the Empire of the Sun is in Taiwan, so many experts look for the lost continent of civilization that is so-called the land of Mu or Atlantis should be the same land of ancient Taiwan. The map of the line of colonization from the land of Mu to the entire world should be redrawn as the following.

Donnelley's 13 Propositions of Atlantean Subject

Ignatius Donnelly was a U.S. Congressman, populist writer. In 1882, Donnelly published “*Atlantis: The Antediluvian World*” , which details theories concerning the mythical lost continent of Atlantis. The Donnelley's 13 Propositions is as following:

1. There once existed in the Atlantic Ocean, a large island, which was the remnant of an Atlantic continent, and known to the ancient world as Atlantis.
2. The description of this island given by Plato is not, as has been long supposed, fable, but veritable history.
3. Atlantis was the region where man first rose from a state of barbarism to civilization.
4. It became in the course of the ages, a populous and mighty nation, from whose overflowing all over the world were populated by civilized nations.
5. It was the true Antediluvian world, the Garden of Eden, representing a universal memory of a great land, where early mankind dwelt for ages in peace and happiness.

6. The gods and goddesses of the ancient Greeks and northern Europeans were simply the kings, queens, and heroes of Atlantis; and the acts attributed to them in mythology are a confused recollection of real historical events.

7. The mythology of Egypt and Peru represented the original religion of Atlantis, which was Sun worship.

8. The oldest colony formed by the Atlantean was probably in Egypt, whose civilization was a reproduction of that of the Atlantis.

9. The implements of the 'Bronze Age' of Europe and the manufacturers of iron were derived from Atlantis.

10. The first alphabet all in the world was derived from an Atlantean alphabet, which was also conveyed to the Mayas of Central America.

11. Atlantis was the original seat of the Aryan family of nations, the Semitic peoples and the European races.

12. Atlantis perished in a terrible convulsion of nature, in which the whole island sank into the ocean, with nearly all its inhabitants.

13. A few persons escaped in ships and on rafts, and carried to the nations east and west tidings of the appalling catastrophe.

Donnelly's 13 propositions are in conformity with environment of Taiwan

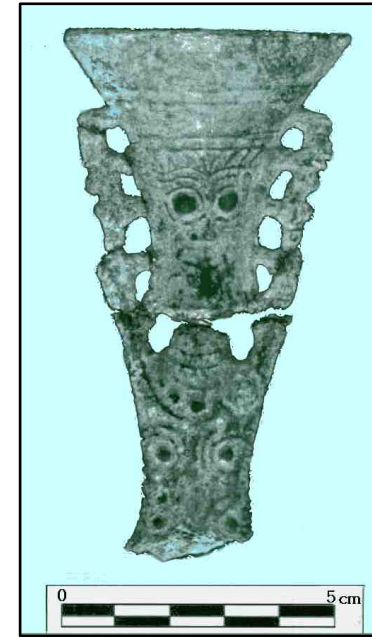
1. Atlantis is quoted in the Atlantic Ocean by the mistake. From the clues of Solon, Atlantis is in the Pacific Ocean (Real Ocean) not Atlantic Ocean. Taiwan conforms to the remnant of a large land in Pacific Ocean and is known to the ancient world.
2. According to Homer's epic of *Iliad*, the experts find the remnant of Trojan War at the Sparta in Greece that proves the mythology to be truthfulness. Most people think Plato's story of Atlantis is true. According to the ancient books of China, Peng-Lai Fairyland is just Taiwan that is also true. Peng-Lai Fairyland is actually Atlantis.
3. Atlantis is human's earliest civilized place, i.e. Eden, its ruler is the Empire of Atlantis, namely the motherland of man, is in fact the Empire of the Sun that Churchward talked about, and according to the statement of this book the Empire of the Sun is in ancient Taiwan.
4. The Empire of the Sun sent emigrants in three routes and migrated to all the world to set up three colonized countries: the all parts of America were ruled by the Kharas Empire; Europe, the Baltic Sea, the

Black Sea and area of the Caspian Sea were ruled by the Uighur Empire; The areas of Mediterranean, Africa and Egypt were ruled by the Naga Empire. Actually the Atlantis Empire was the Empire of the Sun, and it disappeared in ancient Taiwan.

5. In the age of the Atlantis Empire in the true Antediluvian world, the aboriginal in Taiwan has abundant produce; they dwelt for ages in peace and happiness. Certainly the people in later age should name the different title as Eden, Asgard...etc., representing a universal memory of the great land. These above-mentioned situations show the so-called Atlantis is actually ancient Taiwan.
6. The Empire of Atlantis was Sunworship that meant it was the Empire of the Sun. Both ancient Greece and North Europe were the colonies of the Empire of the Sun, just the kings, queens, and heroes of Atlantis became deification that was very normal to legend. Atlantis was actually the ancient Taiwan.
7. The mythology of Egypt and Peru represented the original religion 'Sunworship' of Atlantis. There are many remnants and totems of Sunworship till now in Egypt and Peru, which was the colonized

country of the Empire of the Sun. The Atlantis Empire was Sun-worship that implied it was the Empire of the Sun and was in ancient Taiwan.

8. Egypt divides into two religious sects: the east and the west each claim its ancestor comes from the eastern and western continent. In fact there is just the same “the continent of Mu”. Certainly the civilization of Egypt came from the Empire of the Sun in the land of Mu and it was once the colony of the Empire of the Sun, according to ‘the lost continent of Mu’. So, we can infer Atlantis is the land of Mu, not only the Egyptian civilization was reproduced from Atlantis that is to say the reappearing of ancient civilization of Taiwan.
9. In March 2005, the accurate mold of bronze ware and ironware were dug out in remnant of Jiu-Xiang-Lan of Taidung in Taiwan. From the mold the archaeologists infer Taiwanese aboriginal had craft civilization technology that a factory produced in a large amount early, so the technology of bronze ware and ironware in Europe should spread in ancient times from people of Taiwan, who what was so called the Atlanteans.



There were the molds of bronze ware and cast iron, and bronze knife head dug out at Jiu-Xiang-Lan Remains of Taidung in Taiwan.

10. Certainly the alphabets of Phoenician, Mayas and all the European came from the motherland — The Atlantis Empire, which was the Empire of the Sun. The ancient aboriginal of Taiwan had ancient writing that the Empire of the Sun left over, and was earlier than the Xia era of China (2000 B.C.) in the past. So the true features of the ancient alphabets of the world should spread from ancient Taiwanese since the Empire of the Sun.

11. The area of Indo-European family of nations, Semitic peoples and Turanian races were the colonies under the Empire of the Sun. Atlantis was the original seat of these nations, which were under the Empire of Atlantis that meant both the empire were the same one. So, this empire was the Empire of the Sun in the land of Mu and it was found in ancient Taiwan.
12. 12,000 years ago, North section of Snow Mountains in Taiwan volcano eruption, landslide produced, in the wide mountain region of Ilan coast at northeast corner of Taiwan up to 800 km² avalanched into the sea. The capital Poseidonia in seashore fell into Pacific Ocean sea floor, and then the descendant thought Atlantis sank into the sea by mistake. In fact the Taiwan island and with whole resident did not sink into the ocean and become extinct, but just the survived people recognized by mistake that's it.

13. The landslide of Snow Mountains in Taiwan caused mega-tsunami, and its wave was up to more than several hundred meters high, certainly it formed the global appalling catastrophe, so just there were lucky survivors from a holocaust of a few residents, fled from cataclysm in the different nations of the old and new worlds. Some aboriginal of the whole world later spread the ancient legend of cataclysm to reach us.

The above-mentioned 13 propositions are admitted by masses, but except article 1: 'Atlantis was in the Atlantic Ocean', which we have explained as above, is quoted by the mistake; other propositions mostly conform with environments of Taiwan; especially in March 2005 in the east coast of Taiwan archaeologists already found the accurate molds of ancient bronze ware and ironware that were in conformity with article 9, so we can assert: 'Atlantis is exactly Taiwan'.